

# Installation and Configuration of NavRepository

---

*Explains in details the installation process and initial configuration of NavRepository*

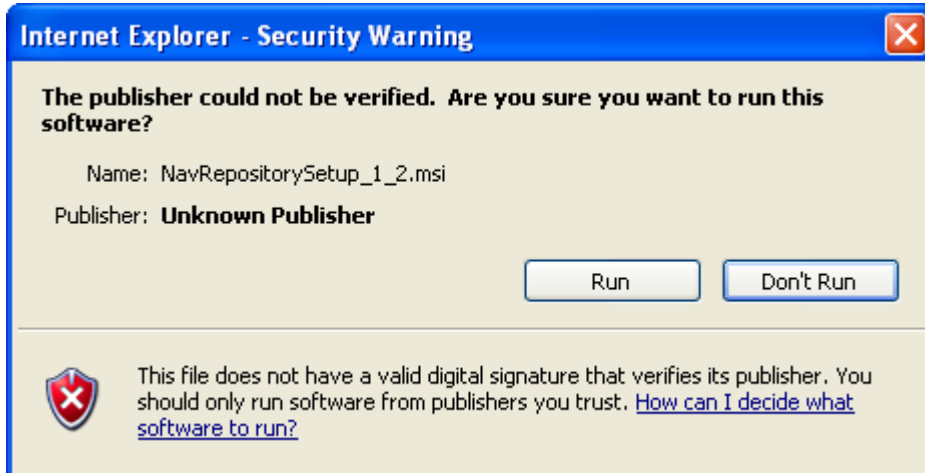
## Table of Contents

<a href="#">Installation of NavRepository.....</a>	<a href="#">2</a>
<a href="#">Connection to Navision Database.....</a>	<a href="#">3</a>

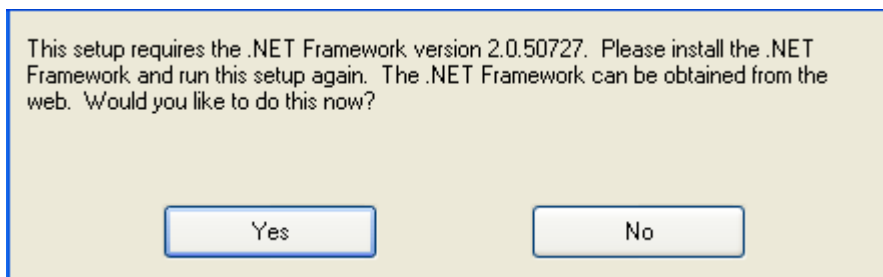
## Installation of NavRepository

The installation process of *NavRepository* is pretty straight forward. All needed files and/or manuals could be found on: <http://www.navutils.com/navrepo/download.html>

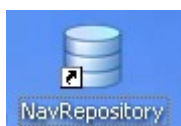
Start the *NavRepository* installation by running the setup file *NavRepositorySetup\_XXX.msi*, where XXX represents the actual version of the product. If you get the following message, press the button *Run* to continue.



If you get the following message, it means that you don't have the required *.Net Framework* version 2.0 or higher installed on your PC. In this case press the button *Yes* to download and install the required *.Net* framework first. When the installation of *.Net Framework* completes, restart the *NavRepository* installation.



Continue the *NavRepository* installation until it finishes. After the installation completes the following icon will appear on your desktop. Double click on it in order to start *NavRepository*.



## Connection to Navision Database

Next you would need to connect *NavRepository* to the *Navision* database you work with. Currently *NavRepository* supports only *Navision* databases based on *MS SQL Server (Database Type)*. Enter or select the server name, and then specify the connection or authentication options. Enter the database login information – the user name and the password to be used while connecting to the database, in case you're not using the windows authentication.

Next, enter or select the *Navision* database name. You can use the button on the right of the *Database* field in order to select the database from a list instead of typing its name.

Finally select the company you work with. When the company is not selected, the objects of all companies are subject to synchronization. Company selection is useful when there are tables specific to a company.

The screenshot shows the 'Connect to Database' dialog box with the following configuration:

- Database Type: MS SQL Server
- Use Windows Authentication:
- Connect via TCP/IP:
- Server: localhost
- Port: (empty)
- Use Specific Port:
- Database User: sa
- Password: (masked with dots)
- Database: Demo Database NAV (5-0)
- Company: CRONUS International Ltd.
- Local Repository: ry\Repository\Demo Database NAV (5-0)14
- Sync Unmodified Objects:
- Sync Table Objects:
- Sync TableData Objects:
- Sync Object Definitions (as Text):

Pay attention to the synchronization options:

- *Sync Unmodified Objects* – when not checked only objects marked as *Modified* in the database are subject to synchronization. When checked – both modified and unmodified objects are subject to synchronization

- *Sync TableData Objects* – when not checked the *TableData* objects in the database are not subject to synchronization. When checked – the *TableData* objects in the database are also synchronized. The *TableData* objects are usually zero-length objects used internally by *Navision*.
- *Sync Table Objects* - when not checked the *Table* objects in the database are not subject to synchronization. When checked – the *Table* objects in the database are also subject to synchronization.
- *Sync Object Definitions (as Text)* – when not checked only the BLOB-references of *Navision* objects are subject to synchronization. When checked both BLOB-references and the textual object definitions are subject to synchronization. The synchronization of textual object definitions makes possible the version-to-version comparisons of objects and the full utilization of external source control systems, such as *SVN* or *CVS*.

Finally press the button *OK*. If the entered database information is correct, the connection to the database will succeed, and the list of the *Navision* objects, subject to synchronization, will show up.